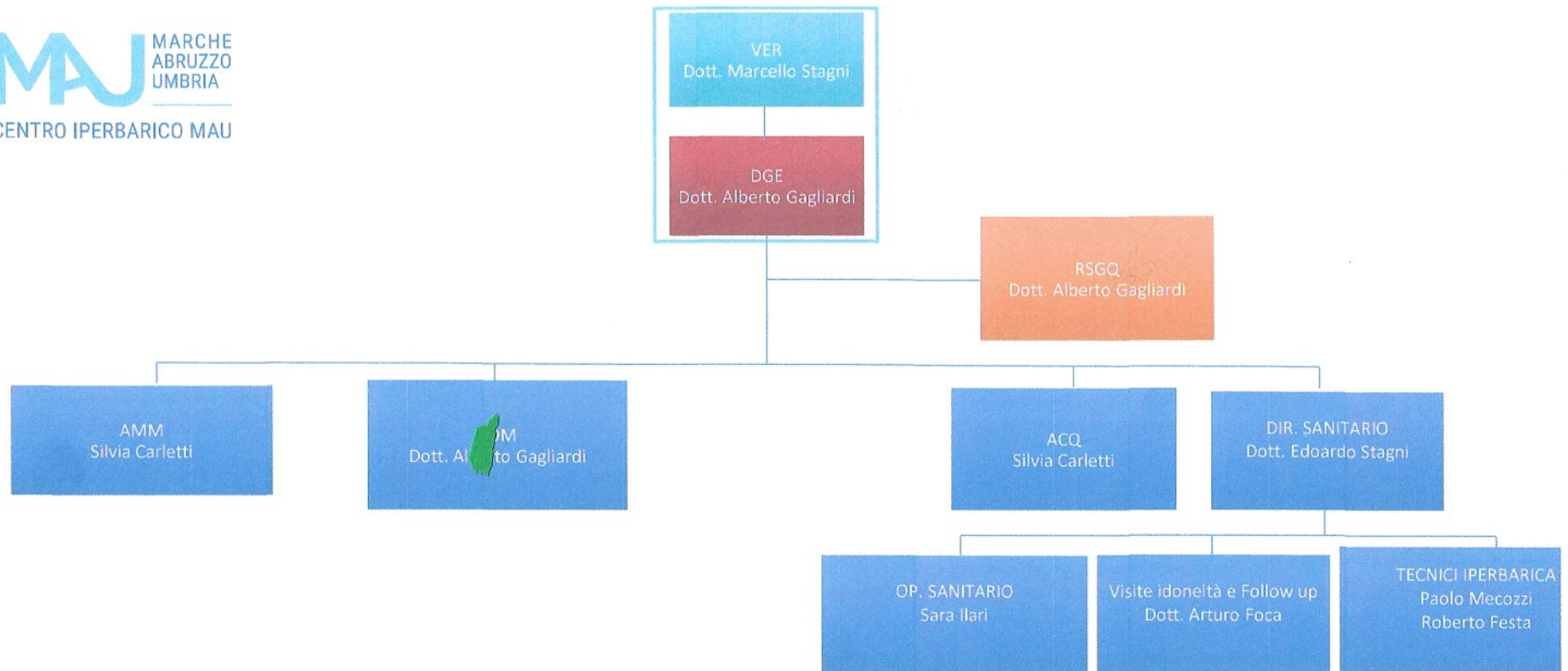


ORGANIGRAMMA AZIENDALE

MAU MARCHE
ABRUZZO
UMBRIA
CENTRO IPERBARICO MAU



Data 20.09.2022

Firma DGE:

O.T.I. MAU srl

Via Mazzini, 12 - 63021 PORTO S. ELPIDIO (FM)
P. IVA: 02430270443